

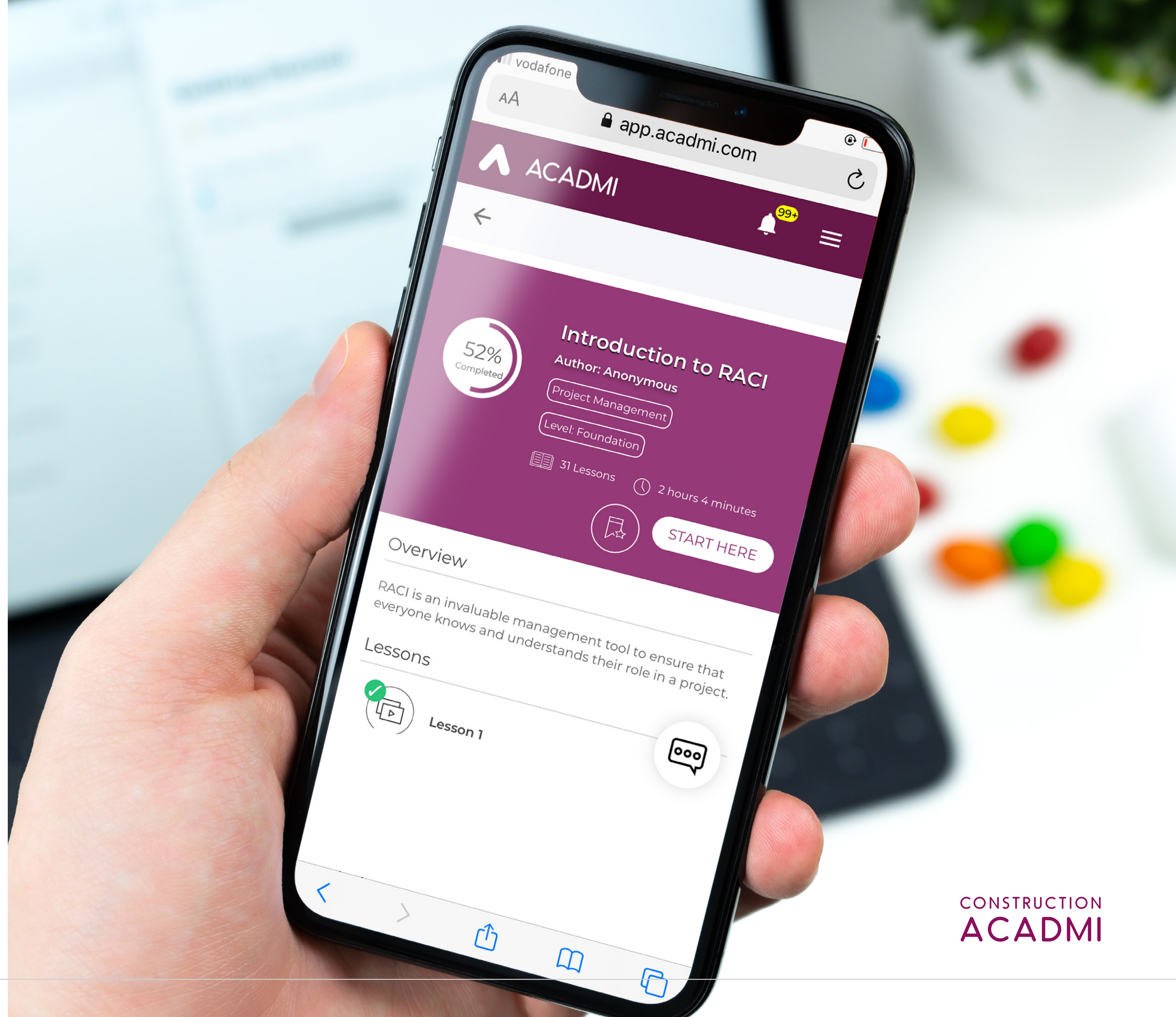


NEXT GENERATION MOBILE TRAINING FOR THE CONSTRUCTION INDUSTRY



Who Are We?

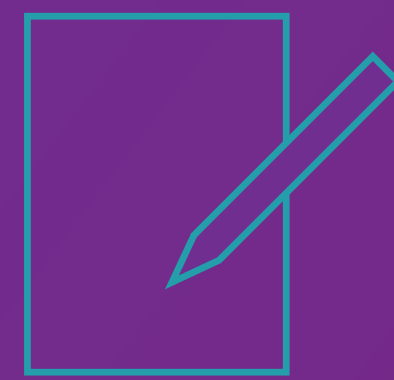
Construction Acadmi's App is a mobile solution for companies to deliver skills, knowledge and compliance training to their employees and freelance / sub-contracted workforce in the most effective way possible. With a branded Learning Platform, companies will find it effortless to develop, deliver and track course content. And, with a range of additional tech features and solutions tailored to the Construction Industry, Acadmi's App is the most cost-effective training solution on the market.





How Does Construction Acadmi Work?

Companies will have immediate and seamless access to Acadmi's library of highly interactive and gamified training content, specifically aimed at the Construction Sector. These unique courses will allow companies to test their employees' behaviour and decision-making process – promoting best practice across the industry.



1

Sign-Up

Brand your App / Create your Community / Invite Employees, Sub-Contractors & Freelancers / Dedicated Account Manager / Limitless Number of Employees & Admins



2

Engage your Staff

Welcome Videos / Handheld On-Boarding Process / Personalised Settings / Individual Skills Needs & Availability / Personalised Progress Dashboard / Company Leaderboard



3

Content Delivery

Create a Media Rich, Interactive Course Library / Deliver On-Boarding, Compliance & Internal Training Courses / Schedule Live Webinars & Q&As / Assign Content to User Groups / Assign Course Building Rights to 'Company Champions' / Limitless Content Views



4

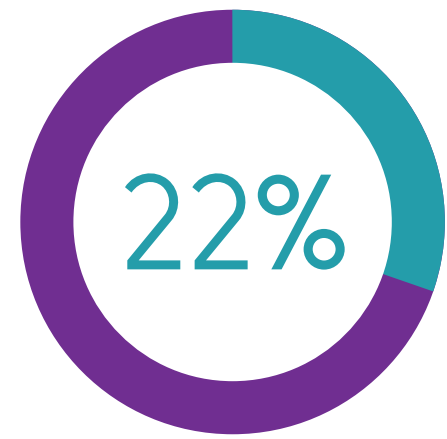
Report Back

Access Real-Time Dashboard Analytics / User & Course Engagement, Performance & Activity Rates / Feedback & Ratings / Download CSV Reports

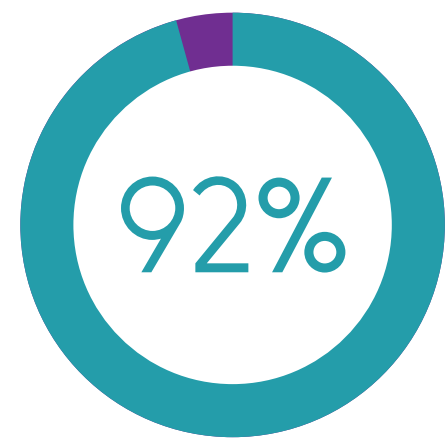


Why Construction Acadmi?

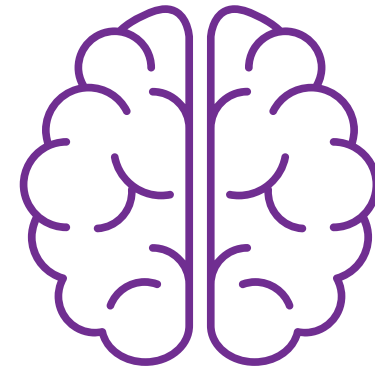
Construction Acadmi's App is constantly striving to increase a Company's Productivity and Content Retention Rate from Training & Skills Development whilst at the same time, lowering their HR costs and Staff Turnover Rate.



Having run extensive trials across the sector with over 100 employees, Construction Acadmi has improved the retention rate of training content by 22%.



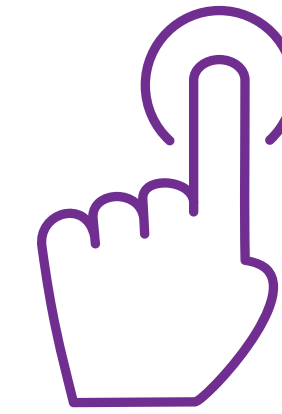
Over 92% of employees in the trial found Acadmi's online & mobile platform to be a more effective delivery mechanism to train staff than physical training.



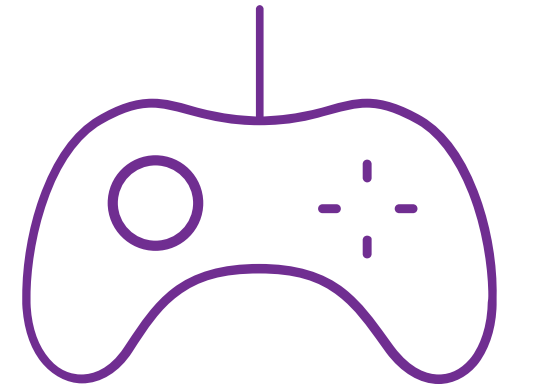
Intelligent & Adaptive



Cutting-Edge Mobile Tech



Simple & Intuitive to use



Playful elements of gamification



Construction Acadmi Features

Set up Project Teams and assign employees as well as freelancers, sub-contractors or external stakeholders to that group. Project Managers, at a glance will be able to access worker profiles, training records & qualifications as well as individually uploaded medical records. They will be able to distribute Site induction Forms and specific training to group members; upload incidents to a visual online log; access Data Sheets on-the-go and write up COSHH Assessment Forms and send them to colleagues within minutes using Construction Acadmi's Bot.

Platform Set Up

- Simple License Set Up
- Platform Branding Tools
- Unique URL Address
- User Management Tools
- CSV file upload for bulk invites
- Zero Set Up Costs

Platform Usage

- Limitless Number of Admins
- Limitless Usage of Platform
- 50 GB Upload Capacity
- Scale Users up or down

Platform Support

- Dedicated Account Manager
- 24/7 User Support
- 12-hour commitment to log tickets
- Refund for service disruption over 48 hours

Platform Security

- Encrypted Secure Log-In
- SSL / HTTPS Security
- Cloud Back Up of Data

- Database Encrypted at Rest
- OTP Identification Layer

User On-Boarding

- Simple User Sign Up
- On-Boarding Video Guides
- Add Training Preferences
- Access to Personal Settings
- Handholding Tool Tips for Guidance

Course Builder

- Access to Intuitive Course Builder
- Videos, Articles, PDFs & YouTube Embeds
- 50 + Interactive Quizzes & Exercises
- Set Video Assignments & Essay-based Assessments
- Assign to Individuals, Groups, Roles or Departments
- Set Course Deadlines / Start & End Dates
- Strict Lesson Ordering
- Manage Blended Live Sessions

- Courses with Pass & Fail Marks
- SCORM Compatibility
- H5P API Integration

User Course Access

- Access to Course Catalogue
- Add Content to Personalised Dashboard
- Add Content to Personalised Wishlist
- Course Progress Bar
- Recommendations based on training requirements
- Daily Training Sprint based on availability
- Motivational Training Notifications

Social, Gamification, Bot & Notifications

- Lesson by Lesson Discussion Forums
- Points-based Training
- User Peer-to-Peer Leaderboard
- Personal Training Stats

- Mobile / Email / In-App Notifications
- Group Assignments
- Bot Recommendations / Training Health Check

Reporting Analytics & Tracking

- High Level Real-Time Dashboard
- Engagement, Performance & Activity Stats
- Drill down to records / lesson or exercise
- Drill down to records / user
- Course Ratings & Feedback
- Downloadable Reports
- SCORM Lesson & Question Level Data Import
- Google Analytics Integration



Unique Compliance Training: Reimagined and Redelivered

Construction Acadmi is launching with a series of unique, engaging and highly interactive courses exploring the day-to-day risks of working in the Construction Industry through the eyes of an individual employee.

Each Trainee will need to take an active involvement - effectively taking on the role of the worker, weighing up and evaluating the information presented to them and making critical decisions to determine and manage their risk, throughout their day - both on-site as well as at home. Through these choices, an employer will not only be able to test the trainee's day-to-day behavioural decision-making but also, make active recommendations to improve both their short-term safety and long-term health conditions as well as avoid suffering a fatal or serious injury on-site.

Split across three different story-like courses or

'episodes', as we call them, users will be faced with making specific choices or 'Decision Points', resulting in 16+ possible conclusions to each episode - ranging from the positive to the other extreme of potentially damaging, debilitating & fatal consequences for the worker.

Attached throughout each storyline at key moments will be an extensive range of 'Information Points' as well as 'Exercises & Games' that trainees can view or interact with, all relating to the core compliance subject of each episode.

This is a completely new approach to delivering compliance training that will engage each viewer through its relatability - reinforcing learning and the importance of making life-changing choices and best practice decisions on a daily basis.



Aimed at:

The programme is specifically designed to appeal to anyone entering into the Construction Industry at a labour level through to more senior managers and directors.



Episode 1: Breathing Easy

Outline:

“Breathing easy” is an interactive learning module which allows the participant to observe the potential effects on the lungs throughout a normal working day and the challenges on the respiratory system in defeating hazardous substances.

How will the lungs deal with the simple task of sweeping up after chasing out a wall? Does it matter if a worker wears a mask or not whilst on-site? How does facial hair affect the exposure to asbestos and silica dust? What other sinister hidden substances and materials are there on a Construction Site that could affect a worker? How do you use the right Dust Extraction or Suppression Tools to mitigate the risks to a worker’s health?

The course will teach the trainee to identify and ask the right questions to protect them from Asbestos and Silica Dust exposure whilst also, at the same time, emphasising the importance of legislation and documents, such as an Asbestos Register & Management Plan.

Learning Objectives:

By the end of this episode participants will:

- Identify the effects of accumulative exposure to harmful substances on the lungs
- Identify the physical effects of short and long-term exposure to asbestos
- Recognise appropriate control measures to prevent and mitigate harmful effects
- Understand how seemingly minor decisions can have a long-lasting effect and impact
- Be able to site the benefits of applying legislation within the workplace
- Understand key asbestos-related documentation

Course Content:

- Asbestos: What is it and what are its properties?
- Different Types of Asbestos
- How and where is asbestos used?
- The Respiratory System & Its Core Component Parts
- The Defence Functions of the Respiratory System
- The Journey of A Dust Particle into the Lungs
- The Dangers of Asbestos: Asbestosis / Pleural thickening / Mesothelioma / Cancer / Silicosis
- Occupational Exposure to ‘Acceptable Dust’
- Face Fit Testing: A Demonstration
- Human Facial Hair & RPE
- Selection and type of respiratory PPE / RPE
- Dust Extraction & Dust Suppression
- Vacuum Systems & Classes: Their Use, Limitation & Ensuring Maximum Draw
- The Implementation of the Control of Asbestos Regulations (2012)
- Registers / Asbestos Management Plan / Surveys
- Current Asbestos-Related Legislation
- Bird’s Triangle and Mitigating Risk



Episode 2: Pain in the Neck

Outline:

This episode explores the pressures and strains that we put our bodies under during the course of a single day, affecting parts of the musculoskeletal system that are often overlooked by traditional manual handling courses. The episode looks at the wider range of biomechanical functions and how the poor choices we make on a daily basis can potentially contribute to pain and discomfort. Pain is not always related to something heavy being lifted incorrectly.

This episode is about embedding best practice behaviour – not only at work but also from the moment we wake up until the time we go to sleep. What’s the best way to pick up a heavy bag? When is it appropriate to ask others to help? Or to use mechanical aids? What footwear should one wear to work? And what equipment do you need when not working in a neutral position? Through the episode, trainees will learn that making these minor adjustments and changes in our daily behaviour can have significant long-term improvement on a worker’s health and ability to work as well as earn money.

Learning Objectives:

By the end of this episode participants will:

- Understand the ability of the musculoskeletal system and its subsequent limitations
- Be able to evaluate the actions required to prevent non-neutral posture
- Understand the actions required to reduce the chance of short & long-term injury
- Be able to distinguish between poor human lifting techniques and LOLER planned activity
- Understand and be able to select the mechanical alternatives for lifting equipment
- Understand the benefits of regulations related to the use of equipment in the workplace

Course Content:

- Postural Positioning, Biomechanics & Basic Function of the Musculoskeletal System
- Ergonomic Factors in the Workplace / Wearing the right footwear
- Why the Individual is the most important aspect of LITE / TILE
- Planning Route to lift equipment
- Lifting from different heights
- Team Lifting of Equipment
- Using Alternative Mechanical Lifting Equipment to lift, pull, handle, push and drag
- PUWER (Provision & Use of Work Equipment Regulations)
- Health & Safety (Manual Handling Operations) Regulations 1992
- LOLER (Lifting Operations & Lifting Equipment Regulations) 1998



Episode 3: Don't Fall for it

Outline:

The final episode in the course takes an in-depth look at the more immediate dangers posed to a worker's safety through working at height. The Work at Height Regulations and the fundamental Law of Gravity form the basis to this section of the course. Despite extensive information and training within the workplace, this episode explores the pressures placed on workers to compromise on safe practices in order to complete or expedite the job at hand.

This episode explores the multitude of factors that affect a worker's decision-making including the selection and suitability of equipment to assist working at height (both regulation as well as improvised), its inspection and the competency of those workers using that equipment. All of that is combined with the demands and requirements from planning and organising work along with optimising time and resources for commercial reasons.

Learning Objectives:

By the end of this episode participants will:

- Understand the legal requirements for working at height
- Be able to apply those Industry Regulations to a real-life working environment
- Recognise the need to select the appropriate equipment to assist working at height
- Understand the value and importance of a pre-inspection and the associated risks
- Understand the competencies required to operate that equipment
- Learn to evaluate the behaviour required to avoid compromise in safety standards
- Recognise the choices available for remaining safe & competent in extreme situations

Course Content:

- Site Rules & Induction
- Health & Safety (Work at Height) Regulations (2005)
- The Safe & Effective Use of Powered Access: IPAF
- The Safe Use of Mobile Access Towers: PASMA
- Industrial Rope Access: IRATA
- Hierarchy of Control
- Types of equipment & inspections
- Low level access
- Ladders / Step Ladders: The Do's & The Don'ts / Short-Term Use
- Selection & Suitability of Ladders in Restricted Tasks / Pre-Inspection
- Hop-ups / Harnesses (Safety Inspection) / Podiums / Stilts / Scissor Lifts / Skyjacks
- Mobile Elevated Work Platforms (MEWP): Size & Range of Use
- MEWPs: Limitations & Inspections / Core Competencies Required
- Different Types of Scaffolding: Erection, Inspection & Maintenance
- Danger Areas & Falling Objects
- Man-safe systems: Range of Use / Limitations & Inspections
- Evacuation Safety
- Edge Protection
- Prodek / Easi-Dec / Trad & Pro Dec / Trestles
- Safety Systems & Fall Prevention / Nets / Soft Landing Systems



About Us

Construction Acadmi was established in 2019 with an imperative to change the nature of corporate training from one that was flat, one-dimensional and solitary to a new method of content provision that was mobile, interactive and social, tailored around the individual's specific training requirements and aligned with the shifting trends of the 'modern-day learner'.



Partners

Acadmi have partnered with NK Training & Consulting, an independent training provider delivering Occupational Health, Safety and Wellbeing support in the Construction Industry.

NK seek to place the needs of the learners ahead of any other priority. The company exists on the intelligence gathering of its core

founding members, horizon scanning for the latest developments and ideas and constantly keeping training fresh and innovative.

We are also actively supported and funded by the Ufi Charitable Trust, Virgin Start-Up and Accelerator Academy.





The Team



Arjun Chatterji
CEO and Founder

has a proven track record in disrupting the educational / training market. Prior to this role, Arjun built Imaginox, the UK's first Global Online Film Academy in collaboration with the National Film and TV School, which was awarded with a NESTA Incubation Grant and went on to be nominated for most innovative product of the year in the media industry in 2016.



Nigel Biney
Lead Consultant

is a Chartered Member of the Institute of Occupational Safety & Health (IOSH), Member of the International Institute of Risk & Safety Management (IIRSM). Prior to setting up NK Training, Nigel was a Principal Lecturer at CITB, Senior Officer for Health & Safety in a Local Authority and has worked across a range of very high-profile projects, including collaboratively with the Olympic Delivery Authority (London 2012) and Thames Water (AMP5).



Kevin Hithersay
Advisor

is a chartered member of IOSH (CMIOSH) and also a Fellow of the Royal Society of Public Health (FRSPH) and has been involved in health and safety on a full-time basis since Jan 2001. In 2003, Kevin took on a role with the Construction Industry Training Board (CITB) as a Health, Safety and Supervisory Trainer delivering a broad range of health, safety and management courses and on projects as prestigious as Terminal 5 Heathrow Airport and the Olympic Park (London). Kevin is a national trainer for MHFA England.



Deborah Hithersay
Advisor

is a Fellow of the Royal Society for Public Health, a qualified APT (Anatomical Pathology Technologist) who took an active part in day-to-day mortuary and bereavement services within the NHS, in support of HM Coroner. Deborah holds her own QUALSAFE registration to deliver first aid courses, alongside which she is registered with MHFA England as a mental health first aid instructor.



Pricing

Acadmi plan to disrupt pricing significantly across the Construction Sector, offering a low-cost monthly subscription model to companies that will provide them and their employees with continuous access to the platform. Pay only for the members signed up to the site. There will now no longer be a need to purchase any new content - even as courses are added to the library and employees have a resource they can refer to as many times as they wish.

Annual Fee*

Number of User Licenses	0 – 250	250 – 500	500 – 1000	1000 +
Pricing / User License / Month (paid annually)	£1.50 (£18 / year / user)	£1.35 (£16.20 / year / user)	£1.20 (£14.40 / year / user)	£1.00 (£12 / year / user)

3 Month Fee**

Number of User Licenses	0 – 250	250 – 500	500 – 1000	1000 +
Pricing / User License / Month (paid annually)	£3.00 (£9 / 3 months / user)	£2.50 (£7.50 / 3 months / user)	£2.00 (£6 / 3 months / user)	£1.50 (£4.50 / 3 months / user)

The Construction Acadmi package includes the following features as standard:

- No Set-Up Costs
- Free Training & On-Boarding Support
- Brandable Platform & Course Builder
- Access to On-Going Course Library
- Access to Construction Features
- 50GB Upload Capacity
- Limitless Number of Admins
- Scale up or down pricing tiers
- Dedicated Account Manager
- 24/7 Technical Support
- Tickets logged in under 12 hours
- Refunds for disruption over 48 hours
- Series of Video Help Guides
- Access to all downloadable features
- Commission Acadmi to build bespoke content

* These prices are based on paying an annual license.

** There is a minimum period of 3 months that each user will need to subscribe



STAY ONE STEP AHEAD OF THE CURVE

Sign up for a 'No Strings' 28 Day Trial of Construction Acadmi



arjun@acadmi.com



[facebook.com/
constructionacadmi](https://facebook.com/constructionacadmi)



[twitter.com/
/constructionacadmi](https://twitter.com/constructionacadmi)



(+44) 7985 579 780